

CONTRACT CELL DEPARTMENT

CORRIGENDUM - II

Tender No.: UCSL/CC/T/CIVIL/288

Date: 29-10-2024

Sir,

CORRIGENDUM-II – TENDER FOR MOVABLE SHED FABRICATION & ERECTION WORK

1. The following terms of the subject tender is amended as follows:

FOR	READ AS
<ul style="list-style-type: none"> Fixing of rails -CR80 to the foundation base plates to be done by the contractor in proper alignment and level. Rail will be supplied by UCSL. As per the drawing Moveable shed wheel will also be supplied by UCSL and the same needs to be fixed by the vendor. 	<ul style="list-style-type: none"> Fixing of rails -CR100 to the foundation base plates to be done by the contractor in proper alignment and level. Rail will be supplied by UCSL. Supply and installation of wheels with brackets, all necessary fixtures, pins, bearings etc. is under contractor scope. Separate scope of work and connection detail drawings for the wheel fixing is given in this corrigendum.

NORMAL AND TALLER SHED: ROOFING AND CLADDING MATERIALS (QTY MENTION FOR EACH SHED)

FOR	READ AS
<p>2. Providing and fixing precoated galvanized iron profile sheets (size, shape, and pitch of corrugation as approved by Engineer-in-charge) 0.50 mm (+ 0.05 %) total coated thickness with zinc coating 120 grams per sqm as per IS: 277, in 240 Mpa steel grade, 5-7 microns epoxy primer on both sides of the sheet, and polyester top coat 15-18 microns. The sheet should have a protective guard film of 25 microns minimum to avoid scratches during transportation and should be supplied in single lengths up to 12 meters or as desired by Engineer In- charge. The sheet shall be fixed using self-drilling/self-tapping screws of size (5.5x 55 mm) with EPDM seal, complete up to any pitch in horizontal/ vertical or curved surfaces, excluding the cost of purlins, rafters, and trusses and including cutting to size and shape wherever required, including all kind of charges. As per the drawings, technical specification and directed by the Engineer in-charge.</p>	<p>2. Providing and fixing precoated galvalume corrugated cladding sheet (size, shape, and pitch of corrugation as approved by Engineer-in-charge) 0.50 mm (+ 0.05 %) as per AS-1397 standard coating class AZ150 zinc aluminum alloy coating mass of 550 Mpa steel grade, Sheet should have protective guard film of 25 microns minimum to avoid scratches during transportation and should be supplied in single length up to 12 meters with or without crimping or as desired by Engineer In-charge. The sheet shall be fixed using self-drilling /self-tapping screws of size (5.5x 55 mm) with EPDM seal, complete up to any pitch in horizontal/ vertical or curved surfaces, excluding the cost of purlins, rafters, and trusses and including cutting to size and shape wherever required including all kind of charges. All as per the drawings, and technical specification and directed by the Engineer in charge.</p>



FOR	READ AS
3. Providing and fixing precoated galvanized steel sheet Ridges plain, Minimum of 300mm on both sides (600mm) 0.50 mm (+ 0.05 %) total coated thickness, Zinc coating 120 grams per sqm as per IS: 277, in 240 Mpa steel grade, 5-7 microns epoxy primer on both sides of the sheet and polyester top coat 15-18 microns using self-drilling/ self-tapping screws complete, with all necessary clamps, bends etc. and including all kind of charges. All as per the drawings, and technical specifications/directed by the Engineer in-charge.	3. Providing and fixing precoated galvalume steel sheet Ridges plain, Minimum of 300mm on both sides (600mm) 0.50 mm (+ 0.05 %) total coated thickness, as per AS-1397 standard coating class AZ150 zinc aluminum alloy coating mass of 550 Mpa steel grade using self-drilling/ self-tapping screws complete, with all necessary clamps, bends etc. and including all kind of charges. All as per the drawings, and technical specifications /directed by the Engineer in-charge.
4. Providing and fixing precoated galvanized steel sheet Gutter 600mm overall girth) 0.50 mm (+ 0.05 %) total coated thickness, Zinc coating 120 grams per sqm as per IS: 277, in 240 mpa steel grade, 5-7 microns epoxy primer on both sides of the sheet and polyester top coat 15-18 microns using self-drilling/self-tapping screws complete, with all necessary clamps, bends, etc., including all kind of charges. All as per the drawings and technical specifications /directed by the Engineer in charge.	4. Providing and fixing 200mm width UPVC gutter with 110mm dia PVC drops using self-drilling/self-tapping screws complete, with all necessary clamps, bends, etc., including all kind of charges. All as per the drawings, and technical specifications/directed by the Engineer in charge.
5. Providing and fixing precoated galvanized steel sheet Flashings/ End Finishes / Aprons. (Up to 600 mm) 0.50 mm (+ 0.05 %) total coated thickness, Zinc coating 120 grams per sqm as per IS: 277, in 240 Mpa steel grade, 5-7 microns epoxy primer on both sides of the sheet and polyester top coat 15-18 microns using self-drilling/self-tapping screws complete, with all necessary clamps, bends, etc., including all kind of charges. All as per the drawings, and technical specifications and directed by the Engineer in-charge.	5. Providing and fixing precoated galvalume steel sheet Flashings/End Finishes/ Aprons. (Up to 600 mm) 0.50 mm (+ 0.05 %) total coated thickness as per AS-1397 standard coating class AZ150 zinc aluminum alloy coating mass of 550 Mpa steel grade using self-drilling/self-tapping screws complete, with all necessary clamps, bends, etc., including all kind of charges. All as per the drawings, and technical specifications and directed by the Engineer in-charge.

FOR	READ AS
2.1. Movable shed construction is required to be completed within 90 days duration from the date of issue of the Purchase Order.	2.1. Movable shed construction is required to be completed within 120 days duration from the date of issue of the Purchase Order.

2. Following scope of work also amended in the tender.

- Cutting of the plates is under UCSL scope. All the different thickness plates will be cut to desired shape and dimensions by UCSL itself and vendor can take the cut plates from UCSL-Hungarakatte facility.





UDUPI COCHIN SHIPYARD LIMITED

UDUPI COCHIN SHIPYARD LIMITED

Ministry of Ports, Shipping and Waterways,
Government of India

- ii. Plate Transportation from UCSL to Vendor location and Vendor location to UCSL shall be the scope of Contractor/Bidder.
- iii. The contractor shall be responsible for any damage/theft/loss caused to the material supplied by UCSL. Compensation with penalty for damage or loss of the item will be recovered from the Contractor on actuals, in the event of loss or damage, the rate will be incurred as per prevailing market rate of the same and on the final decision in this regard will be solely depended upon UCSL, as the case may be.
- iv. Balance materials after machining, needs to be returned back to UCSL & the same measurement need to be noted for reconciliation method.
- v. All the rail joint plates and fixing the rails to the base plate with proper fasteners is under the scope of contractor. Drawings for the same will be shared later. However, the weight of all the fasteners shall be added in the final weighment.
- vi. Fasteners supply is under contractors scope and the same will be paid as per weighment of the fabricated structure.
- vii. Scope of work for Supply and fixing of wheels:

SL No	Description	UOM	Each Shed	Total Qty for 4 Nos of Shed
1	Drive Wheel Full Bracket assembly	Set	02	08
2	Gearbox and motor 5 HP 415 X 3phaseX50 Hz motor with the gearbox of Speed 3 M/minutes, and Chain drive with chain sprocket of Both the wheel	Set	02	08
3	Wheel Dia of 250 mm Tread and 290mm Flange with Load 7.5-ton capacity, Material specification given in the drawing	Nos	04	16
4	Wheel assembled with SKF Bearing 30212	Nos	04	16
5	The Control panel should be designed as per the architecture below. 1. Contactor logic for moving the shed along with cables, GI cable tray, and mounting arrangement. The panel is to be positioned at one end of the shed. 2. 20m long cable and standard 4-pin power connector to supply the panel. 3. A operator pendent with 20m cable to be provided.	Set	01	04

SL No	Description	UOM	Each Shed	Total Qty for 4 Nos of Shed
1	Idler Full Bracket assembly	Set	04	16
2	Wheel Dia of 250 mm Tread and 290mm Flange with Load 7.5-ton capacity, Material specification given in the drawing	Nos	08	32
2b	Wheel assembled with SKF Bearing 30212	Nos	08	32





UDUPI COCHIN SHIPYARD LIMITED

Ministry of Ports, Shipping and Waterways,
Government of India

3. Following line items will be omitted from the tender scope.

- i. Scope of work clause No: 1.5 (Material scope) Bill of Quantities, Sl No: 5 (E250-ISM 300 (300X90) in both type 1 & 2 shed.
- ii. Scope of work clause No: 1.5 (Material scope) Painting work quantity, Sl No: 5 (E250-ISM 300) in type 1& 2 shed.

4. Revised Payment Terms.

4.1. Payment will be done in Three (03) stages:

STAGE-I:

1. 70% of the value of the total materials supplied for each shed with necessary Test Certificates/ documentation, as applicable for the materials, with acceptance and certification by the UCSL-officer-in-charge.

STAGE-II:


1. 70% Service value & Balance 30% of the supply value will be released, only after satisfactory erection, installation of each shed and acceptance by UCSL.

STAGE-III:

1. 30% of the Service value of all the sheds with necessary Test certificates / Documentation, as applicable for the materials, with acceptance and certification by the UCSL-Officer-in-Charge.

5. Revised Price Bid format enclosed as an Annexure-IV-A.

6. All the other terms and conditions of the tender enquiry remains unchanged.


For Udupi Cochin Shipyard Limited,




Assistant General Manager (Materials & Contract Cell)

मुहम्मद अनस एम. एम.
MUHAMMAD ANAS M M
प्रबंधक/MANAGER
उडुपि कोचीन शिपयार्ड लिमिटेड
UDUPI COCHIN SHIPYARD LIMITED
मालपे, कर्नाटक/MALPE, KARNATAKA-576 108

**UDUPI COCHIN SHIPYARD LIMITED**

Tender for Movable Shed Fabrication & Erection Work
UCSL/CC/T/CIVIL/288 DT: 03RD OCT 2024

REVISED PRICE BID FORMAT

Sl. No.	Description	Quantity	Unit	Supply Amount (A)	Service Amount (B)
1	Supply of Structural Material, as per indicative quantum of Material.	125	Ton		NA
2	Fabrication & Erection of Movable shed as per scope of work	210	Ton	NA	
3	Roofing Material supply and installation as per scope of work	1400	Sq. m		
4	Drive wheel assembly supply and installation work as per scope of work	8	Set		
5	Idler wheel assembly supply and installation work as per scope of work	16	Set		
6	Cladding Material supply and installation as per scope of work	2000	Sq. m		
7	Gutter & Drain material supply and installation as per scope of work	120	Mtr.		
8	Rails fixing work (CR 100)	150	Mtr.	NA	
9	Surface Preparation & Painting of Movable shed	6200	Sq. m		
10	Total:				
11	Total of A+B:				
12	CGST/SGST.....%				
	Grand Total Amount:				
Grand total in words-					
i. The rates quoted should be all inclusive and shall include the service charges and other incidental expenditures, if applicable.					
ii.Quotes with Conditional rates/additional charges/Conditional discounts will be disqualified.					

- L1 will be determined based on the serial no.11

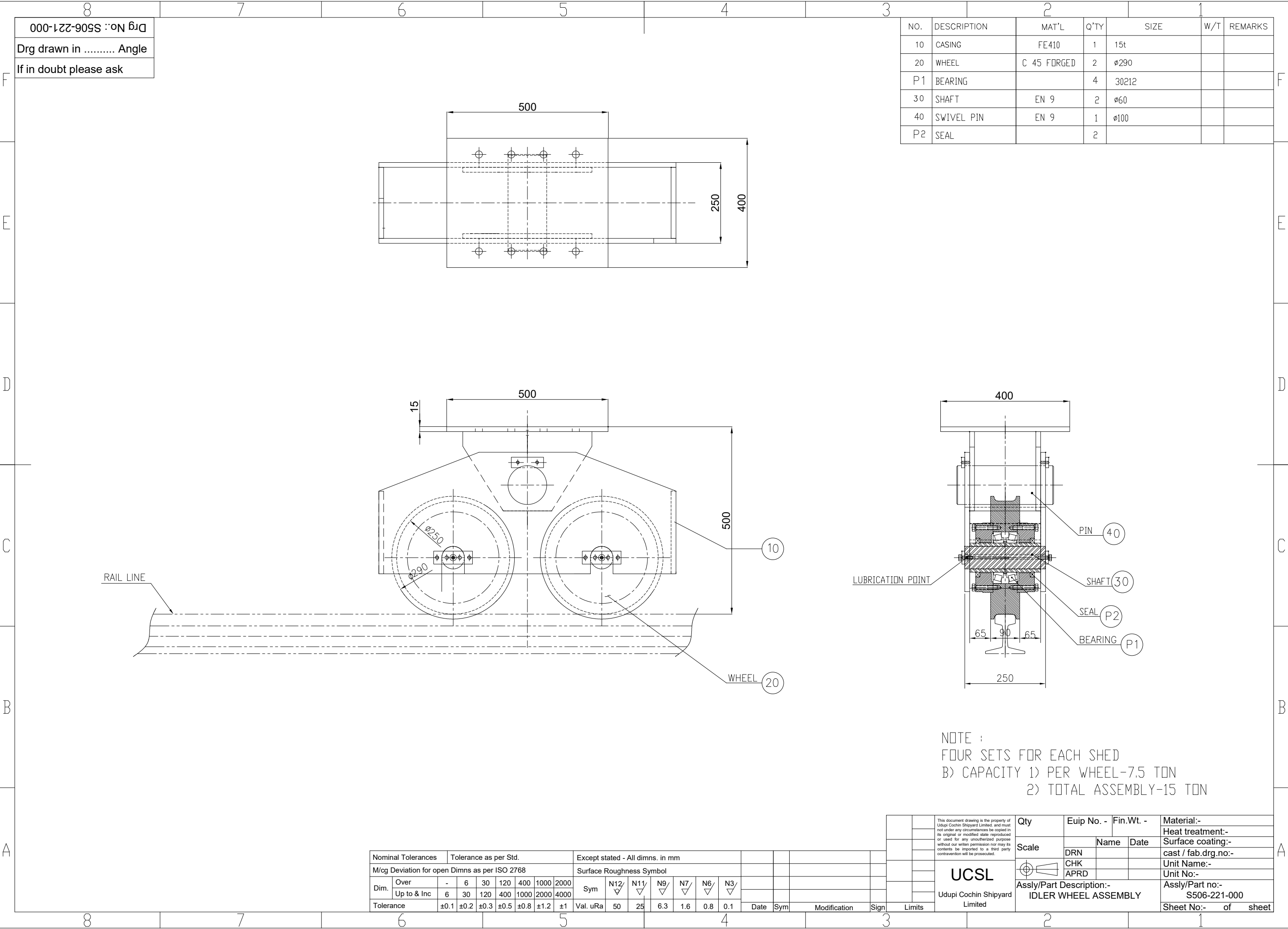
Signature:

Date:

Address of the contractor:

Seal:



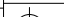


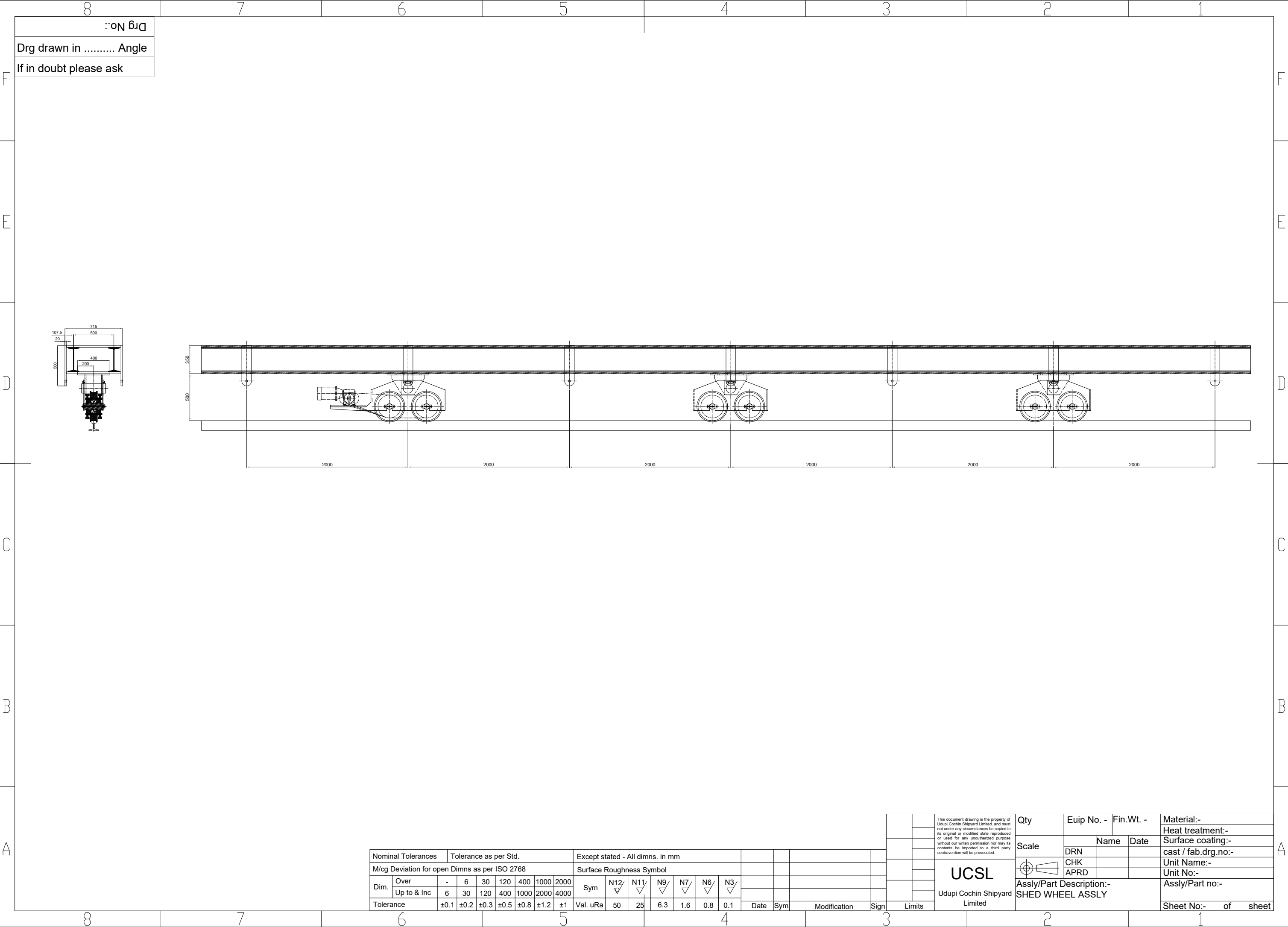
Nominal Tolerances			Tolerance as per Std.						
M/cg Deviation for open Dimns as per ISO 2768									
Dim.	Over	-	6	30	120	400	1000	2000	
	Up to & Inc	6	30	120	400	1000	2000	4000	
Tolerance		±0.1	±0.2	±0.3	±0.5	±0.8	±1.2	±1	

Date		Sym		Modification		Sign		Limits	

UCSL

Udupi Cochin Shipyards
Limited

Qty	Eup No. -		Fin.Wt. -		Material:-	
Scale		Name	Date		Heat treatment:-	
	DRN				Surface coating:- cast / fab.drg.no:-	
	CHK				Unit Name:-	
	APRD				Unit No:-	
Assly/Part Description:- IDLER WHEEL ASSEMBLY					Assly/Part no:- S506-221-000	
					Sheet No:- of sheet	



Drw No.:

Drw drawn in Angle

If in doubt please ask

Nominal Tolerances		Tolerance as per Std.							Except stated - All dimns. in mm																																																																																																																																																																																																																																																																																																																																																																																																																																																																																																																																																																																																																																																																																																																																																																																																																																																																																																																																																																																																																																																																																																																																																																																																																																																																																		
--------------------	--	-----------------------	--	--	--	--	--	--	----------------------------------	--	--	--	--	--	--	--	--	--	--	--	--	--	--	--	--	--	--	--	--	--	--	--	--	--	--	--	--	--	--	--	--	--	--	--	--	--	--	--	--	--	--	--	--	--	--	--	--	--	--	--	--	--	--	--	--	--	--	--	--	--	--	--	--	--	--	--	--	--	--	--	--	--	--	--	--	--	--	--	--	--	--	--	--	--	--	--	--	--	--	--	--	--	--	--	--	--	--	--	--	--	--	--	--	--	--	--	--	--	--	--	--	--	--	--	--	--	--	--	--	--	--	--	--	--	--	--	--	--	--	--	--	--	--	--	--	--	--	--	--	--	--	--	--	--	--	--	--	--	--	--	--	--	--	--	--	--	--	--	--	--	--	--	--	--	--	--	--	--	--	--	--	--	--	--	--	--	--	--	--	--	--	--	--	--	--	--	--	--	--	--	--	--	--	--	--	--	--	--	--	--	--	--	--	--	--	--	--	--	--	--	--	--	--	--	--	--	--	--	--	--	--	--	--	--	--	--	--	--	--	--	--	--	--	--	--	--	--	--	--	--	--	--	--	--	--	--	--	--	--	--	--	--	--	--	--	--	--	--	--	--	--	--	--	--	--	--	--	--	--	--	--	--	--	--	--	--	--	--	--	--	--	--	--	--	--	--	--	--	--	--	--	--	--	--	--	--	--	--	--	--	--	--	--	--	--	--	--	--	--	--	--	--	--	--	--	--	--	--	--	--	--	--	--	--	--	--	--	--	--	--	--	--	--	--	--	--	--	--	--	--	--	--	--	--	--	--	--	--	--	--	--	--	--	--	--	--	--	--	--	--	--	--	--	--	--	--	--	--	--	--	--	--	--	--	--	--	--	--	--	--	--	--	--	--	--	--	--	--	--	--	--	--	--	--	--	--	--	--	--	--	--	--	--	--	--	--	--	--	--	--	--	--	--	--	--	--	--	--	--	--	--	--	--	--	--	--	--	--	--	--	--	--	--	--	--	--	--	--	--	--	--	--	--	--	--	--	--	--	--	--	--	--	--	--	--	--	--	--	--	--	--	--	--	--	--	--	--	--	--	--	--	--	--	--	--	--	--	--	--	--	--	--	--	--	--	--	--	--	--	--	--	--	--	--	--	--	--	--	--	--	--	--	--	--	--	--	--	--	--	--	--	--	--	--	--	--	--	--	--	--	--	--	--	--	--	--	--	--	--	--	--	--	--	--	--	--	--	--	--	--	--	--	--	--	--	--	--	--	--	--	--	--	--	--	--	--	--	--	--	--	--	--	--	--	--	--	--	--	--	--	--	--	--	--	--	--	--	--	--	--	--	--	--	--	--	--	--	--	--	--	--	--	--	--	--	--	--	--	--	--	--	--	--	--	--	--	--	--	--	--	--	--	--	--	--	--	--	--	--	--	--	--	--	--	--	--	--	--	--	--	--	--	--	--	--	--	--	--	--	--	--	--	--	--	--	--	--	--	--	--	--	--	--	--	--	--	--	--	--	--	--	--	--	--	--	--	--	--	--	--	--	--	--	--	--	--	--	--	--	--	--	--	--	--	--	--	--	--	--	--	--	--	--	--	--	--	--	--	--	--	--	--	--	--	--	--	--	--	--	--	--	--	--	--	--	--	--	--	--	--	--	--	--	--	--	--	--	--	--	--	--	--	--	--	--	--	--	--	--	--	--	--	--	--	--	--	--	--	--	--	--	--	--	--	--	--	--	--	--	--	--	--	--	--	--	--	--	--	--	--	--	--	--	--	--	--	--	--	--	--	--	--	--	--	--	--	--	--	--	--	--	--	--	--	--	--	--	--	--	--	--	--	--	--	--	--	--	--	--	--	--	--	--	--	--	--	--	--	--	--	--	--	--	--	--	--	--	--	--	--	--	--	--	--	--	--	--	--	--	--	--	--	--	--	--	--	--	--	--	--	--	--	--	--	--	--	--	--	--	--	--	--	--	--	--	--	--	--	--	--	--	--	--	--	--	--	--	--	--	--	--	--	--	--	--	--	--	--	--	--	--	--	--	--	--	--	--	--	--	--	--	--	--	--	--	--	--	--	--	--	--	--	--	--	--	--	--	--	--	--	--	--	--	--	--	--	--	--	--	--	--	--	--	--	--	--	--	--	--	--	--	--	--	--	--	--	--	--	--	--	--	--	--	--	--	--	--	--	--	--	--	--	--	--	--	--	--	--	--	--	--	--	--	--	--	--	--	--	--	--	--	--	--	--	--	--	--	--	--	--	--	--	--	--	--	--	--	--	--	--	--	--	--	--	--	--	--	--	--	--	--	--	--	--	--	--	--	--	--	--	--	--	--	--	--	--	--	--	--	--	--	--	--	--	--	--	--	--	--	--	--	--	--	--	--	--	--	--	--	--	--	--	--	--	--	--	--	--	--	--	--	--	--	--	--	--	--	--	--	--	--	--	--	--	--	--	--	--	--	--	--	--	--	--	--	--	--	--	--	--	--	--	--	--	--	--	--	--	--	--	--	--	--	--	--	--	--	--	--	--	--	--	--	--	--	--	--	--	--	--	--	--	--	--	--	--	--	--	--	--	--	--	--	--	--	--	--	--	--	--	--	--	--	--	--	--	--	--	--	--	--	--	--	--	--	--	--	--	--	--	--	--	--	--	--	--	--	--	--	--	--	--	--	--	--	--	--	--	--	--	--	--	--	--	--	--	--	--	--	--	--	--	--	--	--	--	--	--	--	--	--	--	--	--	--	--	--	--	--	--	--	--	--	--	--	--	--	--	--	--	--	--	--	--	--	--	--	--	--	--	--	--	--