

**Question paper of
Senior Ship Draftsman
(Instrumentation)**

Section 1 - General

1) Find the related pair :-

PESTICIDE : PLANT : :

- A) Vaccination : Body
 - B) Medicine : Cure
 - C) Injection : Disease
 - D) Teacher : Student
-

2) The question given below is divided into different parts. Choose the part where any improvement is required. In case no improvement is needed, option '**No improvement**' may be chosen as the answer.

Take out your binoculars/ and will see the / Andromeda galaxy in the sky.

- A) Take out your binoculars
 - B) and will see the
 - C) Andromeda galaxy in the sky.
 - D) No improvement
-

3) Fill in the blanks with the most appropriate preposition.

The teacher divided the sweets ____ all the children.

- A) among
 - B) between
 - C) before
 - D) for
-

4) Synonym of '**Forlorn**'

- A) miserable
- B) happy
- C) exuberant
- D) ebullient

5) In question below, the passage consists of five sentences. The first sentence is given in the beginning. The remaining sentences have been jumbled up. These are labelled as P, Q, R and S. Find out the proper order for the four sentences.

S1: Great quantities of animal oil come from whales.

P : It produces a great quantity of oil which can be made into food for human consumption.

Q : These enormous creatures of the sea are the largest remaining animals in the world.

R : When the whale is killed, the blubber is stripped off and boiled down.

S : To protect the whales from the cold of the Arctic seas, nature has provided it with a thick covering of fat called blubber.

- A) RPQS
 - B) PSRQ
 - C) PRQS
 - D) QSRP
-

6) The first Polish player to win a Grand Slam singles title

- A) Lesley Pattinama Kerkhove
 - B) Simona Halep
 - C) Iga Swiatek
 - D) Alize Cornet
-

7) India's First Lavender festival was inaugurated in

- A) Khajjiar, Dalhousie
 - B) Bhaderwah, Jammu
 - C) Kufri, Shimla
 - D) Palampur, Kangra
-

8) Which of the following e-commerce company has launched 'Shopsy', an app that allows Indians to start online shops for free?

- A) Amazon
 - B) Flipkart
 - C) Snapdeal
 - D) Paytm
-

9) Which of the following is **NOT** among the UNESCO World Heritage Sites in India?

- A) Group of Monuments at Mahabalipuram
- B) Churches and Convents of Goa
- C) Madurai Meenakshi Amman Temple
- D) Mountain Railways of India

10) The word '**Environment**' is derived from

- A) Greek
 - B) Spanish
 - C) French
 - D) Latin
-

11) If $1.5x = 0.04y$, then the value of $(6 - x) / (y + x)$ is

- A) $73/77$
 - B) $7.3/77$
 - C) $730/77$
 - D) $7300/77$
-

12) If 10 men or 20 boys can make 260 mats in 20 days, then 8 men and 4 boys will make how many mats in 20 days ?

- A) 520
 - B) 260
 - C) 240
 - D) 280
-

13) In a fort there is sufficient food for 600 men for a month. If 400 more men arrive at the fort, then how long the food is sufficient?

- A) 20 days
 - B) 18 days
 - C) 28 days
 - D) 36 days
-

14) The average temperature of Monday, Tuesday, Wednesday and Thursday are 31° , and the average temperature of Tuesday, Wednesday, Thursday, and Friday are 29.5° . If the temperature of Friday is $4/5$ times of Monday, find the temperature of Monday.


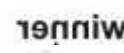
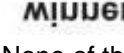
- A) 30°
 - B) 29°
 - C) 30.5°
 - D) Cannot be determined
-

15) 25% of 30% of 45% is equal to

- A) 0.03375
- B) 0.3375
- C) 3.375
- D) 33.75

16) Choose the correct alternative which shows the exact water image of the given word.

winner

- A) 
 - B) 
 - C) 
 - D) None of the options
-

17) A is B's sister. C is B's mother. D is C's father. E is D's mother. Then, how is A related to D?

- A) Grandfather
 - B) Daughter
 - C) Grandmother
 - D) Granddaughter
-

18) Statement: In a one day cricket match, the total runs made by a team were 200. Out of these 160 runs were made by spinners.

Conclusions:

- (I) 80% of the team consists of spinners.
- (II) The opening batsmen were spinners.

- A) Only conclusion I follows
 - B) Only conclusion II follows
 - C) Either I or II follows
 - D) Neither I nor II follows
-

19) If in a code language. COULD is written as BNTKC and MARGIN is written as LZQFHM, how will MOULDING be written in that code?

- A) CHMFINTK
- B) LNTKCHMF
- C) LNKTCHEM
- D) NITKHCMF

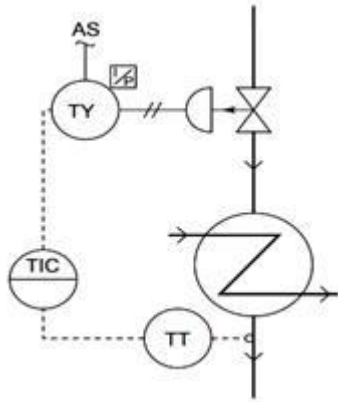
20) Industrial exhibitions play a major role in a country's economy. Such exhibitions, now regularly held in Delhi, enable us to measure the extent of our own less advanced industrial progress and the mighty industrial power and progress of countries like the U.K., U.S.A. and Russia whose pavilions are the centres of the greatest attention and attractions.

The passage best supports the statement that industrial exhibitions:

- A) greatly tax the poor economies.
- B) are more useful for the developed countries like U.S.A. whose products stand out superior to those of the developing countries.
- C) are not of much use to the countries who are industrially backward.
- D) boost up production qualitatively and quantitatively by analytical comparison of a country's products with those of the developed countries.

Section 2 - Senior Ship Draftsman Instrumentation

21) According to this diagram, the controller is , and it is located

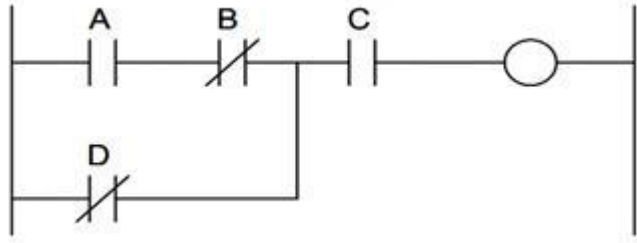


- A) Electronic, in the field (process) area
- B) Pneumatic, on the front of a secondary control panel
- C) Pneumatic, on the front of the main control panel
- D) Electronic, on the front of the main control panel

22) Main engine electronic governor is

- A) a primary sensing element
- B) a final controller element
- C) a controller
- D) an output of controller

23) The Boolean representation of this PLC program is:



- A) $ABC + D$
- B) $C + (A + B)D$
- C) $C + D(A + B)$
- D) $C(AB + D)$

24) The main function of Actuator is _____

- A) To detect output
- B) To detect input
- C) To produce motion
- D) To detect the state of the system

25) Bourdon tube is generally used to measure

- A) Flow
- B) Pressure
- C) pH
- D) Tank level

26) A variable reluctance stepper motor has 8 main poles which have 5 teeth each. If rotor has 60 teeth, calculate the stepping angle.

- A) 0.9 degree
- B) 3 degree
- C) 0.5 degree
- D) 1.8 degree

27) The angle between the isometric axes is _____ degrees.

- A) 180
- B) 60
- C) 120
- D) 90

28) The command which is used to set a new coordinate system by shifting the working XY plane to be the desired location is

- A) UCS
 - B) 3DFACE
 - C) VPOINT
 - D) ELEV
-

29) Hygrometer is used to measure

- A) water content in soil
 - B) water vapour content in air
 - C) capillary potential of soil water
 - D) specific gravity of a liquid
-

30) Which of the following instrument is used for making a study of reflex responses?

- A) EEG
 - B) EMG
 - C) ECG
 - D) VCG
-

31) A control system working under unknown random actions is called

- A) Computer control system
 - B) Digital data system
 - C) Stochastic control system
 - D) Adaptive control system
-

32) For orthographic projections, BIS recommends following projection :

- A) Fourth angle projection
 - B) Third angle projection
 - C) Second angle projection
 - D) First angle projection
-

33) What is the span of an ammeter with range -30 to +30A ?

- A) 60
- B) -60
- C) 30
- D) 20

34) Axis of rotation of wheel in gyroscope is called

- A) Vertical axis
 - B) Spin axis
 - C) Horizontal axis
 - D) Angular axis
-

35) At what PIN number, there is a RESET pin, which is used to reset the microcontroller to its initial values?

- A) PIN 9
 - B) PIN 20
 - C) PIN 30
 - D) PIN 35
-

36) 1001 is a data presented on a set of binary coded decimal output lines. What would be the decimal equivalent of this number in the case of negative logic?

- A) 9
 - B) 6
 - C) 1
 - D) 8
-

37) Farenheit (F), Celsius (C) conversion formula

- A) $(F-5)/32=C-9$
 - B) $(F-32)/9=C/5$
 - C) $(F-9)/5=C/32$
 - D) $(32 F-9)/5=(8C-6)/3$
-

38) In ultrasonic level gauge, the ultrasonic source is placed at the

- A) Bottom of the vessel containing the liquid
 - B) Top of the vessel containing the liquid
 - C) Middle of the vessel containing the liquid
 - D) Far from the vessel containing the liquid
-

39) The frequency of emf generated by an alternator depends upon the alternator speed (N in RPM) and number of poles on the alternator field P & is given as

- A) $PN/60$
- B) $60N/P$
- C) $PN/120$
- D) $120N/P$

40) 5/2 way single solenoid valve has

- A) 2 ports 2 positions
 - B) 5 ports 2 positions
 - C) 5 ports 5 positions
 - D) 2 ports 5 positions
-

41) Determine the full-pitch of a 3-phase, 36 slots, 36 coils, 6 poles motor.

- A) 9
 - B) 6
 - C) 12
 - D) 18
-

42) Which of the following computer language is used for artificial intelligence?

- A) FORTRAN
 - B) PROLOG
 - C) C
 - D) COBOL
-

43) _____ measures velocity at a point of fluid in a stream.

- A) pH meter
 - B) Pitot-Static tubes
 - C) Venturi meter
 - D) None of the options
-

44) When a Star Delta starter is used with 3 phase Squirrel Cage motors, in which sequence is the connection made ?

- A) First Delta, then star
 - B) First Delta, then star and again delta mode
 - C) First star, then Delta mode
 - D) None of the options
-

45) A control system in which the control action is somehow dependent on the output is known as

- A) Open loop system
- B) Semiclosed loop system
- C) Closed loop system
- D) None of the options

46) In a signal flow graph, nodes are represented by small

- A) Circles
 - B) Squares
 - C) Arrows
 - D) Triangles
-

47) Using a membrane for measuring pressure, which of the following represents correct relation for displacement?

- A) $(R^2 \Delta P)/4S$
 - B) $\Delta P/4S$
 - C) $(R^2 \Delta P)/S$
 - D) $(R^2 \Delta P)/2$
-

48) In an SCR, anode current flows over a narrow region near the gate during (where t_d = Delay time, t_r = Rise time and t_p = spread time).

- A) t_d
 - B) t_r and t_p
 - C) t_d and t_p
 - D) t_d and t_r
-

49) To step 110 V ac down to 20 V ac, the turns ratio must be

- A) 5.5
 - B) 18
 - C) 0.18
 - D) 0.018
-

50) A 741 OPAMP has

- A) 6 pins
 - B) 7 pins
 - C) 8 pins
 - D) 5 pins
-

51) Normally open contacts are open when

- A) the Input is not energized
- B) the Input is energized
- C) the Input is higher than 20 Volts
- D) None of the options

52) Which part of the pneumatic system stores the compressed air ?

- A) Air dryer
 - B) Air compressor
 - C) Air receiver tank
 - D) Air lubricator
-

53) What is the vectored address of RST-5?

- A) 0010 H
 - B) 0032 H
 - C) 0028 H
 - D) 0030 H
-

54) In an ideal op-amp, which is not true?

- A) Slew rate is infinite
 - B) Open loop voltage gain is infinite
 - C) Input resistance is infinite
 - D) CMRR is zero
-

55) A line shows its dimension as 14.52. What is the precision of this line?

- A) [0.0]
 - B) [0.00]
 - C) [0.000]
 - D) Display of length has nothing to do with precision
-

56) Which type of valves contain tapered cylindrical obstructer?

- A) Plug valves
 - B) Butterfly valves
 - C) Two way ball valves
 - D) Three way ball valves
-

57) The ability of the sensor to see small differences in reading is called

- A) Offset
- B) Drift
- C) Resolution
- D) Linearity

58) Which of the following logic valve is known as Shuttle valve ?

- A) NAND gate
 - B) AND Gate
 - C) OR Gate
 - D) NOR Gate
-

59) The commands Erase, Copy, Mirror, Trim, Extend, Break etc belong to which tool bar?

- A) Style tool bar
 - B) Layer tool bar
 - C) Modify tool bar
 - D) Draw tool bar
-

60) A Polyline can be broken into individual lines and arcs using which of the following command?

- A) BREAK
 - B) TRIM
 - C) EXPLODE
 - D) OVERKILL
-

61) Which of the following is an open loop control system ?

- A) Field controlled D.C. motor
 - B) Ward leonard control
 - C) Metadyne
 - D) Stroboscope
-

62) The lubricator in a pneumatic circuit is the

- A) Second element in line
 - B) First element in line
 - C) Last element in line
 - D) Third element in line
-

63) P&ID stands for

- A) Piping & Information Diagram
- B) Process & Instrumentation Diagram
- C) Process & Information Drawing
- D) Piping & Instrumentation Diagram

64) Rotameter is used for measuring

- A) Level
 - B) Mass
 - C) Flow
 - D) Voltage
-

65) The impulse response of a LTI system is a unit step function, then the corresponding transfer function is

- A) $1/s$
 - B) $1/s^2$
 - C) 1
 - D) s
-

66) _____ is used to prevent oscillation in moving system.

- A) Deflecting system
 - B) Oscillatory system
 - C) Controlling system
 - D) Damping system
-

67) Which of the following represents piezoelectric materials?

- A) ADP
 - B) Quartz
 - C) Bernilite
 - D) All of the options
-

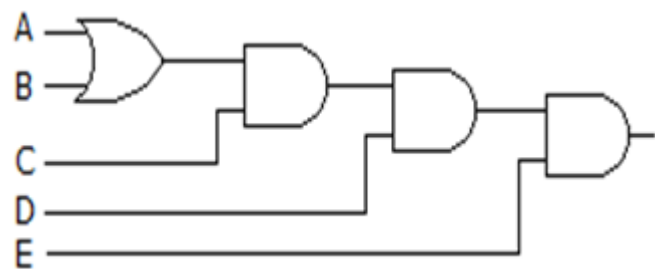
68) Which transform converts the function from time domain to 's' domain (Complex frequency domain)?

- A) Laplace transform
 - B) Fourier series
 - C) Inverse Laplace transform
 - D) Z transform
-

69) Offset can be eliminated by using

- A) Proportional controller
- B) Integral controller
- C) Derivative controller
- D) On-off controller

70) Derive the Boolean expression for the logic circuit shown below:



- A) $C(A + B)DE$
- B) $[C(A + B)D + \bar{E}]$
- C) $[[C(A + B)D]\bar{E}]$
- D) $ABCDE$

SENIOR SHIP DRAFTSMAN (INSTRUMENTATION)							
1	A	21	D	41	B	61	A
2	B	22	C	42	B	62	C
3	A	23	D	43	B	63	D
4	A	24	C	44	C	64	C
5	D	25	A	45	C	65	A
6	C	26	B	46	A	66	D
7	B	27	C	47	A	67	D
8	B	28	A	48	D	68	A
9	C	29	B	49	C	69	B
10	C	30	B	50	C	70	A
11	A	31	C	51	A		
12	B	32	D	52	C		
13	B	33	A	53	C		
14	A	34	B	54	D		
15	A	35	A	55	B		
16	C	36	B	56	A		
17	D	37	B	57	C		
18	D	38	B	58	C		
19	B	39	C	59	C		
20	D	40	B	60	C		

**Question paper of
Laboratory Assistant
(Mechanical)**

Section 1 - General

1) The question given below is divided into different parts. Choose the part where any improvement is required. In case no improvement is needed, option '**No improvement**' may be chosen as the answer.

Take out your binoculars/ and will see the / Andromeda galaxy in the sky.

- A) Take out your binoculars
 - B) and will see the
 - C) Andromeda galaxy in the sky.
 - D) No improvement
-

2) Fill in the blanks with the most appropriate preposition.

The teacher divided the sweets ____ all the children.

- A) among
 - B) between
 - C) before
 - D) for
-

3) Find the related pair :-

PESTICIDE : PLANT : :

- A) Vaccination : Body
 - B) Medicine : Cure
 - C) Injection : Disease
 - D) Teacher : Student
-

4) Synonym of '**Forlorn**'

- A) miserable
 - B) happy
 - C) exuberant
 - D) ebullient
-

5) In question below, the passage consists of five sentences. The first sentence is given in the beginning. The remaining sentences have been jumbled up. These are labelled as P, Q, R and S. Find out the proper order for the four sentences.

S1: Great quantities of animal oil come from whales.

P : It produces a great quantity of oil which can be made into food for human consumption.

Q : These enormous creatures of the sea are the largest remaining animals in the world.

R : When the whale is killed, the blubber is stripped off and boiled down.

S : To protect the whales from the cold of the Arctic seas, nature has provided it with a thick covering of fat called blubber.

- A) RPQS
- B) PSRQ
- C) PRQS
- D) QSRP

6) Which of the following is **NOT** among the UNESCO World Heritage Sites in India?

- A) Group of Monuments at Mahabalipuram
 - B) Churches and Convents of Goa
 - C) Madurai Meenakshi Amman Temple
 - D) Mountain Railways of India
-

7) India's First Lavender festival was inaugurated in

- A) Khajjiar, Dalhousie
 - B) Bhaderwah, Jammu
 - C) Kufri, Shimla
 - D) Palampur, Kangra
-

8) The first Polish player to win a Grand Slam singles title

- A) Lesley Pattinama Kerkhove
 - B) Simona Halep
 - C) Iga Swiatek
 - D) Alize Cornet
-

9) The word '**Environment**' is derived from

- A) Greek
 - B) Spanish
 - C) French
 - D) Latin
-

10) Which of the following e-commerce company has launched 'Shopsy', an app that allows Indians to start online shops for free?

- A) Amazon
 - B) Flipkart
 - C) Snapdeal
 - D) Paytm
-

11) In a fort there is sufficient food for 600 men for a month. If 400 more men arrive at the fort, then how long the food is sufficient?

- A) 20 days
- B) 18 days
- C) 28 days
- D) 36 days

12) The average temperature of Monday, Tuesday, Wednesday and Thursday are 31° , and the average temperature of Tuesday, Wednesday, Thursday, and Friday are 29.5° . If the temperature of Friday is $\frac{4}{5}$ times of Monday, find the temperature of Monday.

- A) 30°
 - B) 29°
 - C) 30.5°
 - D) Cannot be determined
-

13) 25% of 30% of 45% is equal to

- A) 0.03375
 - B) 0.3375
 - C) 3.375
 - D) 33.75
-

14) If $1.5x = 0.04y$, then the value of $(6 - x) / (y + x)$ is


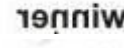

- A) $\frac{73}{77}$
 - B) $\frac{7.3}{77}$
 - C) $\frac{730}{77}$
 - D) $\frac{7300}{77}$
-

15) If 10 men or 20 boys can make 260 mats in 20 days, then 8 men and 4 boys will make how many mats in 20 days ?

- A) 520
 - B) 260
 - C) 240
 - D) 280
-

16) Choose the correct alternative which shows the exact water image of the given word.

winner

- A) 
- B) 
- C) 
- D) None of the options

17) Statement: In a one day cricket match, the total runs made by a team were 200. Out of these 160 runs were made by spinners.

Conclusions:

(I) 80% of the team consists of spinners.

(II) The opening batsmen were spinners.

- A) Only conclusion I follows
 - B) Only conclusion II follows
 - C) Either I or II follows
 - D) Neither I nor II follows
-

18) A is B's sister. C is B's mother. D is C's father. E is D's mother. Then, how is A related to D?

- A) Grandfather
 - B) Daughter
 - C) Grandmother
 - D) Granddaughter
-

19) Industrial exhibitions play a major role in a country's economy. Such exhibitions, now regularly held in Delhi, enable us to measure the extent of our own less advanced industrial progress and the mighty industrial power and progress of countries like the U.K., U.S.A. and Russia whose pavilions are the centres of the greatest attention and attractions.

The passage best supports the statement that industrial exhibitions:

- A) greatly tax the poor economies.
 - B) are more useful for the developed countries like U.S.A. whose products stand out superior to those of the developing countries.
 - C) are not of much use to the countries who are industrially backward.
 - D) boost up production qualitatively and quantitatively by analytical comparison of a country's products with those of the developed countries.
-

20) If in a code language. COULD is written as BNTKC and MARGIN is written as LZQFHM, how will MOULDING be written in that code?

- A) CHMFINTK
- B) LNTKCHMF
- C) LNKTCHMF
- D) NITKHCMF

Section 2 - Laboratory Assistant Mechanical

21) In arc welding, eyes need to be protected against

- A) Sparks & smoke
 - B) Infra-red rays
 - C) Ultraviolet rays
 - D) Infra-red and ultraviolet rays
-

22) If the iron surface contains graphite, it is known as

- A) Alloy cast iron
 - B) White iron
 - C) Grey iron
 - D) Spheroidal graphite
-

23) Machining properties of steel are improved by adding

- A) sulphur, lead
 - B) chromium, vanadium
 - C) lubricants
 - D) nickel, aluminium
-

24) Which of the following materials can't be tested by MPI?

- A) Mg
 - B) Fe
 - C) Co
 - D) Ni
-

25) Which of the following parameter is important for specifying surface roughness?

- A) Size of irregularities
 - B) Spacing of irregularities
 - C) Height of irregularities
 - D) Height, spacing and form of irregularities
-

26) For successful extrusion, the metal should be

- A) Ductile
- B) Malleable
- C) Plastic
- D) Tough

27) As per AWS welding classification of weld consumables, SFA 5.1 shielded metal arc welding electrode E 7018 , what does 70 indicate ?

- A) Length of electrode
 - B) Compressive strength
 - C) Tensile strength
 - D) Impact strength
-

28) Which of the following machine is used to measure compressive strength?

- A) Universal testing machine
 - B) Impact testing machine
 - C) Fatigue testing machine
 - D) Erichsen machine
-

29) Babbitt metal is a

- A) lead based alloy
 - B) iron based alloy
 - C) aluminium based alloy
 - D) zinc based alloy
-

30) Mild steel can be converted into high carbon steel by which of the following heat treatment process?

- A) Annealing
 - B) Normalizing
 - C) Case hardening
 - D) Nitriding
-

31) Who is responsible to establish, implement and maintain a quality policy?

- A) Top Management
 - B) Management Representative
 - C) Quality Manager
 - D) Quality Policy is everyone's responsibility
-

32) Which of the following corrosions are caused due to velocity of fluid flow in pipes?

- A) Bimetal corrosion
- B) Cavitation corrosion
- C) Galvanic corrosion
- D) Intergranular corrosion

33) The purpose of using flux in soldering is to

- A) Increase fluidity of solder metal
 - B) Fill up gaps left in a bad joint
 - C) Prevent oxides forming
 - D) Wash away surplus solder
-

34) In Izod test, the specimen is kept as

- A) Simply supported beam
 - B) Cantilever beam
 - C) Overhanging beam
 - D) Fixed ended beam
-

35) Which are the primary alloying elements of stainless steel 316 Grade ?

- A) Cr, Ni, Mo
 - B) Ti, Cr, Ni
 - C) Cr, Al, Ni
 - D) Cr, Ni
-

36) Which of the following is a non-destructive test ?

- A) tensile test
 - B) impact test
 - C) charpy test
 - D) leak test
-

37) ____ is a non-profit organization that develops and publishes standards of virtually every possible sort, ranging from standards for information technology to fluid dynamics and nuclear energy.

- A) International Organization for Statistics
 - B) International Organization for Standardization
 - C) International Systems for Organization
 - D) International Systems for Standardization
-

38) Which of the following carbon steel is most weldable ?

- A) 0.15 % carbon steel
- B) 0.30 % carbon steel
- C) 0.50 % carbon steel
- D) 0.75 % carbon steel

39) The forging method used to reduce the cross sectional area is called

- A) Upsetting
 - B) Edging
 - C) Heading
 - D) Fullering
-

40) On the basis of its carbon contents and contents of moisture and volatile matter, the best quality coal is

- A) Peat
 - B) Lignite
 - C) Bituminous
 - D) Anthracite
-

41) What are the suitable welding consumable used in welding of Aluminium 5083 H116 grade plts by P- MIG processes?

- A) E 4043
 - B) E 5356
 - C) E 2002
 - D) E 7002
-

42) The bronze medals are made up of

- A) Cu and Zn
 - B) Zn and Ni
 - C) Cu and Sn
 - D) Cu, Zn, Tn
-

43) Which one of the following element is not an alloying element of steel?

- A) Carbon
 - B) Manganese
 - C) Copper
 - D) Silicon
-

44) In Radiography Testing, the dark areas represent an object with _____

- A) Lower density
- B) High density
- C) Porosity
- D) Grain boundaries

45) Pyramid type diamond indenter is used in

- A) Brinell hardness testing
 - B) Rockwell hardness testing
 - C) Vickers hardness testing
 - D) All of the options
-

46) Fatigue curves are popularly known as _____ curves.

- A) S
 - B) S-N
 - C) N
 - D) R
-

47) Arc length in arc welding should be equal to

- A) Half the diameter of electrode rod
 - B) Rod diameter
 - C) Twice the rod diameter
 - D) 2.5 times the rod diameter
-

48) What is the impact testing temperature for EH 36 grade of plates used in shipbuilding ?

- A) Negative 10 Deg C
 - B) Negative 20 Deg C
 - C) Negative 50 Deg C
 - D) Negative 40 Deg C
-

49) Distortion in welding occurs due to

- A) Use of excessive current
 - B) Improper clamping methods
 - C) Use of wrong electrodes
 - D) Oxidation of weld pool
-

50) What is the Weld position specified for welding horizontal groove as per AWS and ISO standards ?

- A) AWS - 2G and ISO - PA
- B) AWS - 2G and ISO - PM
- C) AWS - 2G and ISO - PC
- D) AWS - 2G and ISO - PD

51) Eutectoid steel contains

- A) 0.4 % Carbon
 - B) 0.8 % Carbon
 - C) 1.2 % Carbon
 - D) 2.2 % Carbon
-

52) The objective of ISO-9000 family of Quality management is

- A) employee satisfaction
 - B) skill enhancement
 - C) environmental issues
 - D) customer satisfaction
-

53) Cast iron is characterised by minimum of the following %age of carbon

- A) 0.20%
 - B) 0.80%
 - C) 2%
 - D) None of the options
-

54) What is the cross-section of standard specimen for impact testing?

- A) 10mm × 10mm
 - B) 20mm × 60mm
 - C) 10mm × 40mm
 - D) 45mm × 60mm
-

55) Tensile strength of a material is obtained by dividing the maximum load during the test by the

- A) area at the time of fracture
 - B) original cross-sectional area
 - C) average of area at the time of fracture and original cross-sectional area
 - D) None of the options
-

56) What is the advantage of using direct current in magnetic particle inspection?

- A) Battery maintenance
- B) Demagnetize easily
- C) Variable voltage supply
- D) Subsurface detection

57) Which among the following is the last step in magnetic particle test method?

- A) observation and inspection
 - B) circular magnetization
 - C) demagnetization
 - D) magnetization
-

58) Which of the following is the poorest transmitter of sound?

- A) Oil
 - B) Water
 - C) Air
 - D) Copper
-

59) The forging method used to reduce the cross sectional area is called

- A) Upsetting
 - B) Edging
 - C) Heading
 - D) Fullering
-

60) Pig iron is the name given to

- A) raw material for blast furnace
 - B) product of blast furnace
 - C) iron scrap
 - D) iron in molten form in the ladles
-

61) In Electro gas welding, the welding is done in

- A) Horizontal position
 - B) Vertical position
 - C) Down hand position
 - D) Over head position
-

62) Which of the following factors affects ductile-brittle transition behavior the most?

- A) Triaxiality
- B) Temperature
- C) Strain rate
- D) Time

63) In a Rolling process, the state of stress of the material undergoing deformation is

- A) Pure Compression
 - B) Pure Shear
 - C) Compression and Shear
 - D) Tension and Shear
-

64) Which is the correct order for the liquid penetrant test?

- A) Penetrant apply, development, inspection, surface preparation
 - B) Surface preparation, penetrant apply, development, inspection
 - C) Penetrant apply, development, surface preparation, inspection
 - D) Development, surface preparation, penetrant apply, inspection
-

65) The welding of stainless steel is generally difficult because of the following reason

- A) rust formation takes place
 - B) high melting temperature of stainless steel
 - C) formation of oxide film
 - D) high thermal conductivity
-

66) The ignition characteristics of diesel are expressed in terms of

- A) Octane number
 - B) Cetane number
 - C) Viscosity
 - D) Flash and fire point
-

67) The property of a material that resists penetration or indentation by means of abrasion or scratching is known as

- A) Strength
 - B) Hardness
 - C) Toughness
 - D) Brittleness
-

68) An alloy which does not contain copper is

- A) Bronze
- B) Magnalium
- C) Brass
- D) Bell metal

69) What is the Curie point for most of the ferrous magnetic materials?

- A) 460°C
- B) 770°C
- C) 240°C
- D) 557°C

70) What is the standard used for NABL Accreditation for testing laboratories ?

- A) ISO 17025
- B) ISO 17020
- C) ISO 17034
- D) ISO 9001

LABORATORY ASSISTANT (MECHANICAL)_ MCQ							
1	B	21	D	41	B	61	B
2	A	22	C	42	C	62	B
3	A	23	A	43	A	63	C
4	A	24	A	44	withdrawn	64	B
5	D	25	D	45	C	65	C
6	C	26	C	46	B	66	B
7	B	27	C	47	B	67	B
8	C	28	A	48	D	68	B
9	C	29	A	49	B	69	B
10	B	30	C	50	C	70	A
11	B	31	A	51	B		
12	A	32	B	52	D		
13	A	33	C	53	C		
14	A	34	B	54	A		
15	B	35	A	55	B		
16	C	36	D	56	D		
17	D	37	B	57	C		
18	D	38	A	58	C		
19	D	39	D	59	D		
20	B	40	D	60	B		

**Question paper of
Laboratory Assistant
(Chemical)**

Section 1 - General

1) Find the related pair :-
PESTICIDE : PLANT ::

- A) Vaccination : Body
 - B) Medicine : Cure
 - C) Injection : Disease
 - D) Teacher : Student
-

2) In question below, the passage consists of five sentences. The first sentence is given in the beginning. The remaining sentences have been jumbled up. These are labelled as P, Q, R and S. Find out the proper order for the four sentences.

S1: Great quantities of animal oil come from whales.

P : It produces a great quantity of oil which can be made into food for human consumption.

Q : These enormous creatures of the sea are the largest remaining animals in the world.

R : When the whale is killed, the blubber is stripped off and boiled down.

S : To protect the whales from the cold of the Arctic seas, nature has provided it with a thick covering of fat called blubber.

- A) RPQS
 - B) PSRQ
 - C) PRQS
 - D) QSRP
-

3) Fill in the blanks with the most appropriate preposition.

The teacher divided the sweets ____ all the children.

- A) among
 - B) between
 - C) before
 - D) for
-

4) Synonym of '**Forlorn**'

- A) miserable
- B) happy
- C) exuberant
- D) ebullient

5) The question given below is divided into different parts. Choose the part where any improvement is required. In case no improvement is needed, option '**No improvement**' may be chosen as the answer.

Take out your binoculars/ and will see the / Andromeda galaxy in the sky.

- A) Take out your binoculars
 - B) and will see the
 - C) Andromeda galaxy in the sky.
 - D) No improvement
-

6) The word '**Environment**' is derived from

- A) Greek
 - B) Spanish
 - C) French
 - D) Latin
-

7) Which of the following e-commerce company has launched 'Shopsy', an app that allows Indians to start online shops for free?

- A) Amazon
 - B) Flipkart
 - C) Snapdeal
 - D) Paytm
-

8) India's First Lavender festival was inaugurated in

- A) Khajjiar, Dalhousie
 - B) Bhaderwah, Jammu
 - C) Kufri, Shimla
 - D) Palampur, Kangra
-

9) Which of the following is **NOT** among the UNESCO World Heritage Sites in India?

- A) Group of Monuments at Mahabalipuram
 - B) Churches and Convents of Goa
 - C) Madurai Meenakshi Amman Temple
 - D) Mountain Railways of India
-

10) The first Polish player to win a Grand Slam singles title

- A) Lesley Pattinama Kerkhove
- B) Simona Halep
- C) Iga Swiatek
- D) Alize Cornet

11) If 10 men or 20 boys can make 260 mats in 20 days, then 8 men and 4 boys will make how many mats in 20 days ?

- A) 520
 - B) 260
 - C) 240
 - D) 280
-

12) The average temperature of Monday, Tuesday, Wednesday and Thursday are 31° , and the average temperature of Tuesday, Wednesday, Thursday, and Friday are 29.5° . If the temperature of Friday is $\frac{4}{5}$ times of Monday, find the temperature of Monday.

- A) 30°
 - B) 29°
 - C) 30.5°
 - D) Cannot be determined
-

13) If $1.5x = 0.04y$, then the value of $(6 - x) / (y + x)$ is

- A) $\frac{73}{77}$
 - B) $\frac{7.3}{77}$
 - C) $\frac{730}{77}$
 - D) $\frac{7300}{77}$
-

14) In a fort there is sufficient food for 600 men for a month. If 400 more men arrive at the fort, then how long the food is sufficient?

- A) 20 days
 - B) 18 days
 - C) 28 days
 - D) 36 days
-

15) 25% of 30% of 45% is equal to


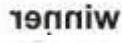

- A) 0.03375
 - B) 0.3375
 - C) 3.375
 - D) 33.75
-

16) If in a code language. COULD is written as BNTKC and MARGIN is written as LZQFHM, how will MOULDING be written in that code?

- A) CHMFINTK
- B) LNTKCHMF
- C) LNKTCMHF
- D) NITKHCMF

17) Choose the correct alternative which shows the exact water image of the given word.

winner

- A) 
- B) 
- C) 
- D) None of the options

18) A is B's sister. C is B's mother. D is C's father. E is D's mother. Then, how is A related to D?

- A) Grandfather
- B) Daughter
- C) Grandmother
- D) Granddaughter

19) Industrial exhibitions play a major role in a country's economy. Such exhibitions, now regularly held in Delhi, enable us to measure the extent of our own less advanced industrial progress and the mighty industrial power and progress of countries like the U.K., U.S.A. and Russia whose pavilions are the centres of the greatest attention and attractions.

The passage best supports the statement that industrial exhibitions:

- A) greatly tax the poor economies.
- B) are more useful for the developed countries like U.S.A. whose products stand out superior to those of the developing countries.
- C) are not of much use to the countries who are industrially backward.
- D) boost up production qualitatively and quantitatively by analytical comparison of a country's products with those of the developed countries.

20) Statement: In a one day cricket match, the total runs made by a team were 200. Out of these 160 runs were made by spinners.

Conclusions:

- (I) 80% of the team consists of spinners.
- (II) The opening batsmen were spinners.

- A) Only conclusion I follows
- B) Only conclusion II follows
- C) Either I or II follows
- D) Neither I nor II follows

Section 2 - Laboratory Assistant Chemical

21) Laboratory use of which of the Chemicals needs permission from Govt. authority ?

- A) Potassium thiocyanate
 - B) All nitrates
 - C) All organic solvents
 - D) Methyl alcohol
-

22) The following causes alkalinity as well as hardness in natural water

- A) Calcium carbonate
 - B) Calcium bicarbonate
 - C) Magnesium carbonate
 - D) All of the options
-

23) The chemical reagent from which the solution of required concentration can be prepared is

- A) Secondary standard
 - B) Concentrated solution
 - C) Dilute solution
 - D) Primary standard
-

24) Buffer solutions

- A) will always have a pH of 7
 - B) are rarely found in living systems
 - C) cause a decrease in pH when acids are added to them
 - D) tend to maintain a relatively constant pH
-

25) An important property of oil to be tested is

- A) chloride
 - B) viscosity
 - C) alkalinity
 - D) density
-

26) The bronze medals are made up of

- A) Cu and Zn
- B) Zn and Ni
- C) Cu and Sn
- D) Cu, Zn, Tn

27) Select which one is an example for gravimetric analysis

- A) estimation of Iron using Potassium Permanganate
 - B) estimation of Sulphate as Barium Sulphate
 - C) detection of Chloride in the given salt sample
 - D) detection of Nitrate in the given salt sample
-

28) Which of the following alloys contain a non-metal as one of its constituents ?

- A) Cast iron
 - B) Brass
 - C) Bronze
 - D) None of the options
-

29) What is the energy that is released upon the formation of an ionic compound?

- A) Ionization energy
 - B) Lattice energy
 - C) Electron gain enthalpy
 - D) Electro positivity
-

30) Which of the following alloy is widely used in thermo couples?

- A) Brass
 - B) Bronze
 - C) Duralumin
 - D) Nichrome
-

31) X ray film is sensitive to light due to the presence of in the film.

- A) Silver Halide
 - B) Silver
 - C) Potassium Permanganate
 - D) Silver Nitrate
-

32) Which is the artificial liquid fuel obtained by fermentation process ?

- A) Fuel oil
- B) Alcohol
- C) Distillate
- D) Kerosene

33) A certain nuclide has a half life period of 30 minutes. If a sample containing 600 atoms, is allowed to decay for 90 minutes, how many atoms will remain?

- A) 150 atoms
 - B) 300 atoms
 - C) 600 atoms
 - D) 75 atoms
-

34) The noble or inert gases are lined up in the _____ column of the periodic table.

- A) Sixteenth
 - B) Seventeenth
 - C) Eighteenth
 - D) Nineteenth
-

35) The strength of an acid depends on

- A) number of neutrons gained
 - B) electronegativity
 - C) number of double bonds
 - D) number of protons released
-

36) Which one of the following is not an alloying element of steel?

- A) Carbon
 - B) Manganese
 - C) Copper
 - D) Silicon
-

37) Major constituent of the gun metal is

- A) Copper
 - B) Nickel
 - C) Iron
 - D) Zinc
-

38) Which of the following pairs will give displacement reactions?

- A) NaCl solution and Copper metal
- B) MgCl_2 solution and Aluminium metal
- C) FeSO_4 solution and Silver metal
- D) AgNO_3 solution and Copper metal

39) Which fuel has the highest liquid petroleum fraction ?

- A) Diesel
 - B) Petrol
 - C) Distillate
 - D) Kerosene
-

40) Amount of a substance in a certain volume of solution is called

- A) Molarity
 - B) Normality
 - C) Molality
 - D) None of the options
-

41) is added to gasoline to increase the octane number.

- A) Tetramethyl lead
 - B) Tetraethyl lead
 - C) Ethyl lead
 - D) Methyl lead
-

42) Tritium is an Isotope of

- A) Carbon
 - B) Hydrogen
 - C) Oxygen
 - D) Nitrogen
-

43) Which of the following is the function of the atomiser in the emission system of Atomic Absorption Spectroscopy?

- A) To split the beam into two
 - B) To break the steady light into pulsating light
 - C) To break large mass of liquid into small drops
 - D) To reduce the sample into atomic state
-

44) Drinking water is required to have the pH value

- A) 6.5-8.5
- B) 6.0-6.5
- C) 5.5-6.5
- D) below 7.0

45) Which fuel is produced by heating bituminous coal continuously for 15 to 18 hours in closed chamber ?

- A) Charcoal
 - B) Anthracite
 - C) Coke
 - D) Briquette coal
-

46) Calorie is the amount of heat required to raise the temperature of ____ of water through one degree centigrade.

- A) one kilogram
 - B) one pound
 - C) one gram
 - D) one ton
-

47) In neutralization titration, acid react with a base to form

- A) Salt and water
 - B) Neutral solution
 - C) Salt and acid
 - D) Concentrated solution
-

48) The Organic solvent added to oil sample to determine the percentage of moisture by distillation method is

- A) Butyl acetate
 - B) Ethyl alcohol
 - C) Methyl alcohol
 - D) Toluene
-

49) Temporary hardness of water can be removed by

- A) cooling
 - B) heating
 - C) adding Bleaching powder
 - D) adding Sodium chloride
-

50) Which of the following molecules formation does not include ionic bond?

- A) LiCl
- B) MgO
- C) SnCl₄
- D) H₂O

51) Conc. Sulfuric acid as available in the market has the approximate density of

- A) 1.1 g/cc
 - B) 1.83 g/cc
 - C) 1.0 g/cc
 - D) 0.9 g/cc
-

52) A spectroscopic technique which examines the wavelengths of photons emitted by atoms during their transition from an excited state to a lower energy state is called

- A) emission spectroscopy
 - B) absorption spectroscopy
 - C) atomic spectroscopy
 - D) None of the options
-

53) Austenite phase in Iron-Carbon equilibrium diagram

- A) is face centered cubic structure
 - B) has magnetic phase
 - C) exists below 727° C
 - D) All of the options
-

54) Which of the following are units of hardness ?

- A) ppm
 - B) Clark's degree
 - C) mg/L
 - D) All of the options
-

55) Aqua regia is

- A) 1:3 Conc. HNO_3 and Conc. HCl
 - B) 1:2 Conc. HNO_3 and Conc. HCl
 - C) 2:1 Conc. HNO_3 and Conc. HCl
 - D) 3:1 Conc. HNO_3 and Conc. HCl
-

56) Which of the following is not an alternative fuel, considering global warming?

- A) Jet fuel
- B) Ethanol
- C) Methanol
- D) Hydrogen

57) Purest form of iron is

- A) Cast iron
 - B) Hard steel
 - C) Stainless steel
 - D) Wrought iron
-

58) In the preparation of 500 ml of N/10 NaOH (Eq wt of NaOH-40g/mol), the amount of NaOH to be dissolved in 500 ml water is

- A) 40 g
 - B) 4 g
 - C) 2 g
 - D) 1 g
-

59) Presence of which material in grey cast iron causes reduced ductility

- A) Graphite
 - B) Aluminium
 - C) Coke
 - D) Zinc
-

60) Sulphur in fuel would cause

- A) Increase in engine life
 - B) Corrosion of parts
 - C) Better burning
 - D) None of the options
-

61) Considering a group in the Periodic table, from top to bottom, the metallic character of the elements

- A) increases
 - B) decreases
 - C) no change
 - D) increases first and then decreases
-

62) The pH of a solution is determined by

- A) concentration of salt
- B) relative concentration of acids and bases
- C) dielectric constant of the medium
- D) environmental effect

63) Which of the following parts are mostly manufactured by using Grey cast iron ?

- A) Pistons
 - B) Surgical Equipments
 - C) Thin Sheets
 - D) Engine Blocks
-

64) Water under normal conditions of temperature and pressure exists in the liquid state. The reason for this is due to the presence of between the molecules.

- A) metallic bond
 - B) ionic bond
 - C) covalent bond
 - D) hydrogen bond
-

65) Half life of radioactive isotope Ir- 192 is 75 days. In how many days the activity of 10 Ci becomes 1.25 Ci ?

- A) 225 days
 - B) 150 days
 - C) 300 days
 - D) 100 days
-

66) Which of the following alloying element of stainless steel that attributes in a large increase in stress - corrosion resistance ?

- A) Nickel
 - B) Chromium
 - C) Carbon
 - D) Nickel and Chromium
-

67) Isotopes are atoms having the same

- A) Atomic mass
 - B) Mass number
 - C) Number of neutrons
 - D) Atomic number
-

68) Which of the given ionisation radiation has less penetration power ?

- A) Beta ray
- B) Alpha ray
- C) Gamma ray
- D) None of the options

69) Which of the following species has highest electron affinity?

- A) F⁻
- B) O
- C) O⁻
- D) Na⁺

70) In order to check the presence of Chloride in water sample, the reagent used is

- A) Sodium Hydroxide
- B) Potassium Hydroxide
- C) Any acid
- D) Silver Nitrate

LABORATORY ASSISTANT (CHEMICAL)_MCQ							
1	A	21	D	41	B	61	A
2	D	22	D	42	B	62	B
3	A	23	withdrawn	43	C	63	D
4	A	24	D	44	A	64	D
5	B	25	B	45	C	65	A
6	C	26	C	46	C	66	A
7	B	27	B	47	A	67	D
8	B	28	A	48	D	68	B
9	C	29	B	49	B	69	B
10	C	30	D	50	D	70	D
11	B	31	A	51	B		
12	A	32	B	52	A		
13	A	33	D	53	A		
14	B	34	C	54	D		
15	A	35	B	55	A		
16	B	36	A	56	A		
17	C	37	A	57	D		
18	D	38	D	58	C		
19	D	39	B	59	A		
20	D	40	A	60	B		

Question paper of Assistant

Section 1 - General

1) Fill up with the most appropriate option:

Nostalgia gripped the veterans as they spoke about small incidents, painful moments, happy times, togetherness and bonding during the sessions that and engrossing.

- A) are engaging
 - B) were engaging
 - C) engaging
 - D) was engaging
-

2) In question below, the passage consists of five sentences. The first sentence is given in the beginning. The remaining sentences have been jumbled up. These are labelled as P, Q, R and S. Find out the proper order for the four sentences.

S1: Finally, he found his car keys in his jeans pockets.

P : Everything he had dreamed of, everything he had hoped for, all his life raced in his head in jumbled blurry images when he felt the cold steel of a gun pointed at him and a hoarse male voice telling him to give him his wallet.

Q : Somehow, he knew this wouldn't end well.

R : He just couldn't have that perfect life he had dreamed of, could he?

S : Then things took a turn for the worse.

- A) PSQR
 - B) PSRQ
 - C) SPQR
 - D) SPRQ
-

3) Change the speech of given sentence :-

I told him that he was not working hard.

- A) I told, "You are not working hard."
 - B) I said, "You are not working hard."
 - C) I said to him, "He is not working hard."
 - D) I said to him, "You are not working hard."
-

4) Give synonym for the word '**defer**'.

- A) defy
- B) different
- C) indifferent
- D) postpone

5) Replace the underlined part of sentence with the most appropriate meaning.
She decided to **publicly support** a system that seemed fair to everyone.

- A) maintain
 - B) advocate
 - C) manage
 - D) praise
-

6) Which of the following is not a member of Schengen Area?

- A) Germany
 - B) Spain
 - C) United Kingdom
 - D) France
-

7) Indian Cricket player breaks Brian Lara's world record after 18 years, by smashing 29 runs as 35 runs came off a single Test match over.

- A) Ravindra Jadeja
 - B) Hardik Pandya
 - C) Rishabh Pant
 - D) Jasprit Bumrah
-

8) Which company made a motorcycle using the metal sourced from India's first aircraft carrier INS Vikrant ?

- A) Hero
 - B) TVS
 - C) Bajaj Auto
 - D) Royal Enfield
-

9) India's first human spaceflight planned by ISRO that aims to take astronauts into a low earth orbit in 2023 is

- A) PSLV-C53
 - B) Chandrayaan-1
 - C) Chandrayaan-2
 - D) Gaganyaan
-

10) Which among the following is the latest version of MS Excel ?

- A) Excel 2020
- B) Excel 2019
- C) Excel 2017
- D) Excel 2016

11) In a regular week, there are 6 working days and for each day the working hours are 8. A man gets Rs. 40 per hour for regular work and Rs. 45 per hour for overtime. If he earns Rs. 10,500 in 5 weeks, then how many hours does he work for?

- A) 220
 - B) 240
 - C) 210
 - D) 260
-

12) In one hour, a boat goes 13 km/hr in the direction of the stream and 7 km/hr against the direction of the stream. What will be the speed of the boat in still water?

- A) 8 km/hr
 - B) 14 km/hr
 - C) 6 km/hr
 - D) 10 km/hr
-

13) The average of 9 observations is 87. The average of the first five observations is 79 and the average of the next three is 92. Find the 9th observation.

- A) 110
 - B) 108
 - C) 112
 - D) Data inadequate
-

14) Rampur is 100 km from Sitapur. At 3 pm, Bharat Express leaves Rampur for Sitapur and travels at constant speed of 30 kmph. One hour later, Laxman Mail leaves Sitapur for Rampur and travels at a constant speed of 40 kmph. Each train makes one stop only at a station 10 km from its starting point and remains there for 15 min. Which train is nearer to Rampur when they meet and what is the distance from that point to Rampur?

- A) Both are equidistant, 40 km
 - B) Both are equidistant, 60 km
 - C) Bharat Express, 40 km
 - D) Laxman Mail, 60 km
-

15) A man loses 20% by selling 10 pencils for 10 rupee. How many pencils should he sell for 12 rupees to gain 20% profit?

- A) 6
 - B) 8
 - C) 9
 - D) 10
-

16) Choose the word which is the most essential part of the given word.

Vibration

- A) motion
- B) electricity
- C) science
- D) sound

17) There is a shift in our economy from a manufacturing to a service orientation. The increase in service-sector will require the managers to work more with people rather than with objects and things from the assembly line.

The passage best supports the statement that:

- A) managers should have a balanced mind.
 - B) service organisations will not deal with objects and things.
 - C) assembly line will exist in service organisations.
 - D) interpersonal skills will become more important in the future work place.
-

18) Pointing to a photograph, a lady tells Pramod, “I am the only daughter of this lady and her son is your maternal uncle”. How is the speaker related to Pramod’s father?


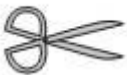

- A) Sister-in-law
 - B) Sister
 - C) Wife
 - D) Mother-in-law
-

19) From his house, Lokesh went 15 km to the North. Then he turned West and covered 10 km. Then, he turned South and covered 5 km. Finally, turning to East, he covered 10 km. In which direction is he from his house?

- A) North
 - B) East
 - C) West
 - D) South
-

20) Choose the picture that would go in the empty box so that the two bottom pictures are related in the same way as the top two are related.



- A) 
- B) 
- C) 
- D) None of the options

Section 2 - Assistant

21) Which of the following storage systems would be most suitable for a client register of a large organization?

- A) Electronic
 - B) Image based
 - C) Microfilm
 - D) Paper based
-

22) Letter, e-mail, telephone are examples of ____

- A) Message
 - B) Feedback
 - C) Channel
 - D) Encoding
-

23) GST came into effect from ----- in India

- A) 1st April 2017
 - B) 1st July 2017
 - C) 1st January 2017
 - D) 1st September 2017
-

24) Which of the following tax is not subsumed in GST?

- A) VAT
 - B) Stamp duty
 - C) Entry Tax
 - D) Excise Duty
-

25) The chief activities included under _____ are filing system, indexing, micro filing and information retrieval.

- A) Records management
 - B) Office communication and correspondence
 - C) Office organisation
 - D) Book keeping
-

26) Ctrl + D shortcut key in Excel will

- A) Open the font dialog box
- B) Apply double underline for the active cell
- C) Fills the cell beneath with the contents of the selected cell
- D) None of the options

27) Which item does not come under the balance sheet?

- A) Sales
 - B) Share capital
 - C) Reserves & surplus
 - D) Unsecured loan
-

28) The account which increases equity is known as

- A) Debit Account
 - B) Credit Account
 - C) Revenue
 - D) Treasury Stock
-

29) In MS Excel, the view that displays a blue line around each page that would be printed is the

- A) Split view
 - B) Page break preview
 - C) Print preview
 - D) Page Layout preview
-

30) Which of the following is true regarding page orientation of a word document?

- A) Page orientation can be changed at any time
 - B) Page orientation of document is determined by printer
 - C) Page orientation must be set before the start of typing
 - D) Page orientation of a document cannot be changed once saved
-

31) What is the full form of PDF?

- A) Printed Document Format
 - B) Public Document Format
 - C) Portable Document Format
 - D) Published Document Format
-

32) In Microsoft PowerPoint, the following WILL NOT advance the slides in a slide show view :

- A) Mouse click
- B) Spacebar
- C) Esc key
- D) Enter key

33) is an art of attempting to acquire information by masking as a trustworthy entity in an electronic communication.

- A) Hacking
 - B) Phishing
 - C) Whaling
 - D) Spoofing
-

34) The kind of debts which are needed to be repaid in a short term is known as

- A) Fixed Liabilities
 - B) Current Liabilities
 - C) Depreciating Assets
 - D) Intangible Assets
-

35) When you enter text in a cell in the Excel, it also appears in the

- A) Status bar
 - B) Formula bar
 - C) Row heading
 - D) Name box
-

36) In an organization where line managers use staff specialists to assist them, the organization structure is called

- A) Line-and-staff organization
 - B) Line organization
 - C) Staff organization
 - D) Chain-of-command organization
-

37) To accept a credit card for payment, we have to open a ----- account with our bank.

- A) Savings Bank
 - B) Current Account
 - C) Merchant Account
 - D) Any of the options
-

38) GST is a ----- based tax on consumption of goods & services

- A) Duration
- B) Destination
- C) Dividend
- D) Development

39) Smaller and less expensive PC-based servers are replacing _____ in many businesses.

- A) supercomputers

- B) clients
 - C) laptops
 - D) mainframes
-

40) Usually, installation files in systems have the extension _____.

- A) .gif
 - B) .doc
 - C) .exe
 - D) .bng
-

41) What is the percentage of customers who visit a Web site and actually buy something called?

- A) affiliate programs
 - B) click-through
 - C) break even
 - D) conversion rate
-

42) From which type of printer can we easily print graphs, charts, drawing, text and photos ?

- A) Inkjet
 - B) Drum
 - C) Laser
 - D) Dot matrix
-

43) A Risograph is best appropriate for

- A) High speed digital printing and copying
 - B) Reducing the time taken in an organized way
 - C) Allowing information to be copied between servers
 - D) Producing documents in short time span
-

44) In which category does compromising confidential information fall?

- A) Threat
- B) Bug
- C) Attack
- D) Vulnerability

45) What is "leading" in typography?

- A) The space between paragraphs
- B) The space between two characters

- C) The space between more than two characters
 - D) The space between lines
-

46) The most important goal of business communication is -----

- A) Organizational goodwill
 - B) Receiver response
 - C) Receiver understanding
 - D) Favorable relationship between sender and receiver
-

47) What is the full form of MFD?

- A) Master File Directory
 - B) Memory File Directory
 - C) Main File Directory
 - D) Master Format Directory
-

48) In manufacturing a product, prime costs are

- A) Raw materials and manufacturing overhead
 - B) Direct materials and direct labour
 - C) Indirect materials and manufacturing overhead
 - D) Indirect labour and manufacturing overhead
-

49) What would you do to highlight a word in MS Office Word document?

You position the cursor next to the word and then _____

- A) Drag mouse while holding button down
 - B) Click mouse once
 - C) Roll the mouse around
 - D) Roll and then click mouse
-

50) Which of the following reports is to be placed before the Parliament by a government company?

- A) Statutory report
- B) Income report
- C) Annual report
- D) Balance sheet

51) Material Requirement Planning(MRP) utilizes software applications for scheduling

- A) sales management
- B) production processes

- C) marketing techniques
 - D) financial management
-

52) What exactly do you mean by “touch typist”?

- A) Typing without the use of the sense of sight
 - B) Typing with the use of sensors
 - C) Typing with Joystick using the sense of sight
 - D) Using virtual keyboard
-

53) ____ mentions the allegation against the staff concerned and asks for a written explanation within a specified time.

- A) Show cause notice
 - B) Memo
 - C) Circular
 - D) Memorandum
-

54) Gaining entry into the user's system and scanning the file system for personal information is known as -----

- A) Spoofing
 - B) Snooping
 - C) Sniffing
 - D) Decryption
-

55) The primary purpose of software is to turn data into _____

- A) programs
 - B) graphics
 - C) objects
 - D) information
-

56) What should be done when there is a paper jam in the photocopier?

- A) A report should be made to the office manager
- B) The photocopier must be switched off at the Power
- C) Follow instructions in the photocopier manual or on the control panel display
- D) A call should be logged with the service department and the photocopier switched off

57) What is the supporting evidence in a business transaction ?

- A) Journal
- B) Ledger
- C) Voucher
- D) Contra Voucher

58) What is the usage of bookmark in browser?

- A) History of favourite website
 - B) Save shortcuts of favourite website
 - C) Cookies of website
 - D) Private content of website
-

59) Horizontal communication takes place between_____

- A) subordinate to superior
 - B) employees with same status
 - C) superior to subordinate
 - D) Any of the options
-

60) In MS Excel, _____ of a worksheet appear vertically and are identified by letters at the top of the worksheet window.

- A) Columns
 - B) Cells
 - C) Rows
 - D) Headings
-

61) All of the following are examples of real cyber security & privacy threats except

- A) Hacker
 - B) Virus
 - C) Spam
 - D) Worm
-

62) A set of rules governing the behavior of all members of an organization is called

- A) Virtual organization
- B) Organizational structure
- C) Code of business conduct
- D) Ergonomics structure

63) When a group agrees to support and commit to the decision of the group, they have reached -----

- A) a census
 - B) a consensus
 - C) a solution
 - D) an analysis
-

64) The most important step of ERP implementation is _____ phase.

- A) installing
 - B) training
 - C) gap analysis
 - D) testing
-

65) The output quality of a printer is measured by

- A) Pages per minute
 - B) Dot per inch
 - C) Pixel per inch
 - D) Character per line
-

66) The main objective of management accounting is

- A) To maintain the accounting records
 - B) To know the amount due from customers and suppliers
 - C) To ascertain, analyse and interpret the results of business operations
 - D) To record all the business transactions
-

67) A book containing a chronological record of business transaction & original record.

- A) Journal
 - B) Ledger
 - C) Trial Balance
 - D) Book entry
-

68) Identify among the following which is used to avoid browser-based hacking.

- A) Adware remover in browser
- B) Incognito mode in browser
- C) Anti malware in browser
- D) Remote browser access

69) How are cells named in MS Excel?

- A) Alphabetically
 - B) Numerically
 - C) Alphanumerically
 - D) Special Character
-

70) The essential elements for writing or entering a complete telephone message are

- A) Date and time, name of caller, telephone number, business affiliation, and your initials.
- B) Date and time, name of caller, telephone number with zip code, business affiliation, all pertinent information, and your initials.
- C) Date and time, name of caller, telephone number, and your initials.
- D) Date, name of caller, telephone number, business affiliation, and your initials.

ASSISTANT							
1	B	21	A	41	D	61	C
2	C	22	C	42	C	62	C
3	D	23	B	43	A	63	B
4	D	24	B	44	A	64	C
5	B	25	A	45	D	65	B
6	C	26	C	46	C	66	C
7	D	27	A	47	A	67	A
8	C	28	C	48	B	68	D
9	D	29	B	49	A	69	C
10	B	30	A	50	C	70	B
11	D	31	C	51	B		
12	D	32	C	52	A		
13	C	33	B	53	A		
14	B	34	B	54	B		
15	B	35	B	55	D		
16	A	36	A	56	C		
17	D	37	C	57	C		
18	C	38	B	58	B		
19	A	39	D	59	B		
20	C	40	C	60	A		